

**Freight Forwarder for all European Origin Air and Ocean Freight:****Rhenus Project Logistics AG**

Zugerstrasse 1
CH-6330 Cham/Zug (Switzerland)
www.rhenusproject.com

Main contact: Urs Gut
urs.gut@ch.rhenus.com
Tel. +41 (0)41 784 23 54
Fax +41 (0)41 781 15 30
Cell +41 79 471 13 23

Note: Rhenus is also handling most Air Shipments from Europe. Delivery Details are communicated on a «per shipment» basis.

Addtl contact: Gregory Dambach
gregory.dambach@ch.rhenus.com
Tel. +41 (0)41 784 23 58
Fax +41 (0)41 781 15 30
Roger Rathgeb
roger.rathgeb@ch.rhenus.com

Full Containers:

Loading at your designated facility or Third-Party Warehouse unless full load trucking to a designated loading warehouse is preferred and approved.

Loading Warehouses:

Breda: Frigo
Receiving Hours: 08:00 – 14:30
Hazeldonk 6284
NL-4836 RD Breda
The Netherlands

Temperatures: frozen only

Frigo
Receiving Hours: 08:00 – 14:30
IABC 5257
NL-4814 RD Breda
The Netherlands

Temperatures: chilled, reefer, dry

contact: Mr. Dennis van Ek,
Mr. Urs Gut,

Tel +31 53 4345463 dennis@dvetransport.nl
Tel +41 41 784 23 54

Basel: FLS Furness Lagerhaus & Speditions AG
Receiving Hours: 07:30 – 16:30
Magnet-Areal, Lachmatt 120
4133 Pratteln, Switzerland
contact: Mr. Michael Bibler
Mr. Michael Graff
Mr. Urs Gut

Temperatures: frozen, chilled, reefer, dry

Tel +41 61 826 98 52 m.bibler@fls-furness.ch
Tel +41 61 826 98 52 m.graff@fls-furness.ch
Tel +41 41 784 23 54



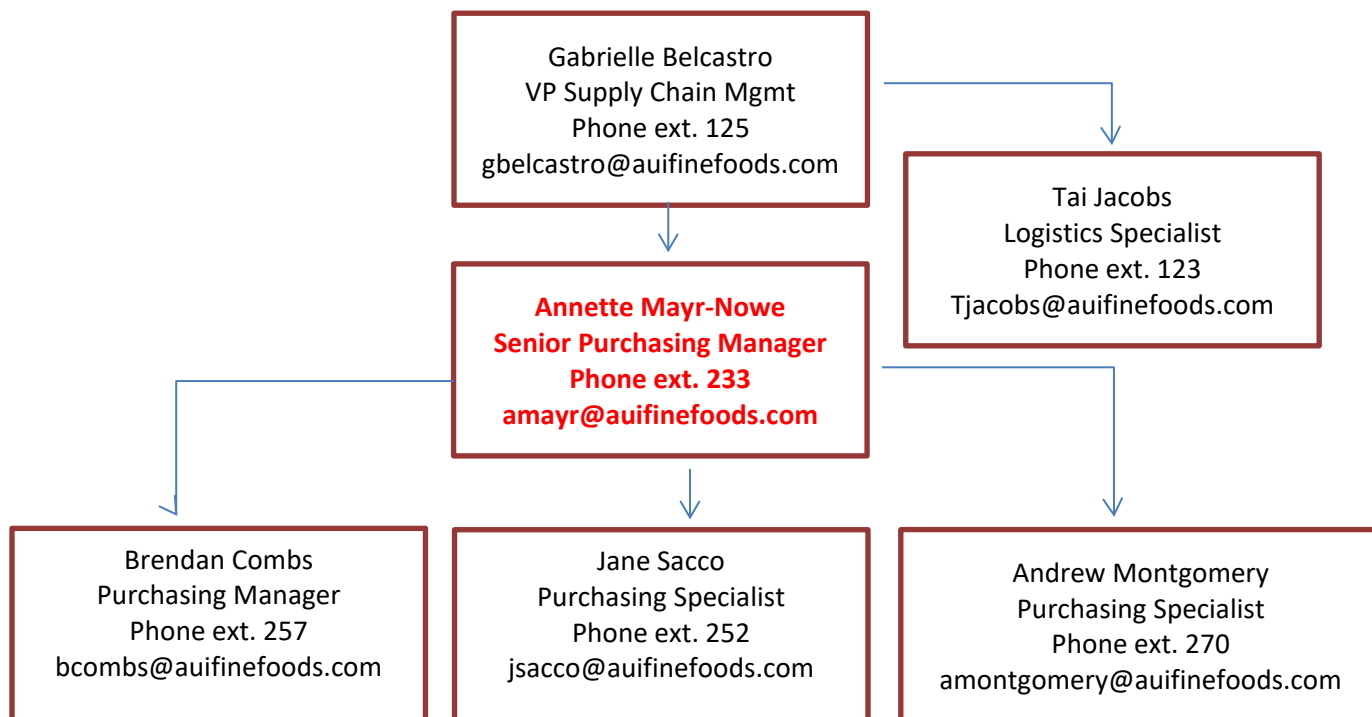
Fine foods.
Inspired service.™

Reefer Containers / Temperature Controlled Air shipments:

Pak-Sense Temperature recorders are provided by AUI. Shipper / Seller is responsible to equip cargo with one Pak-Sense recorder when shipping in full reefer containers that are loaded by Shippers or their designated Third-Party Logistics provider(s). For Air Shipments, Shipper is responsible to equip at least 1 pallet with a Pak-Sense device.

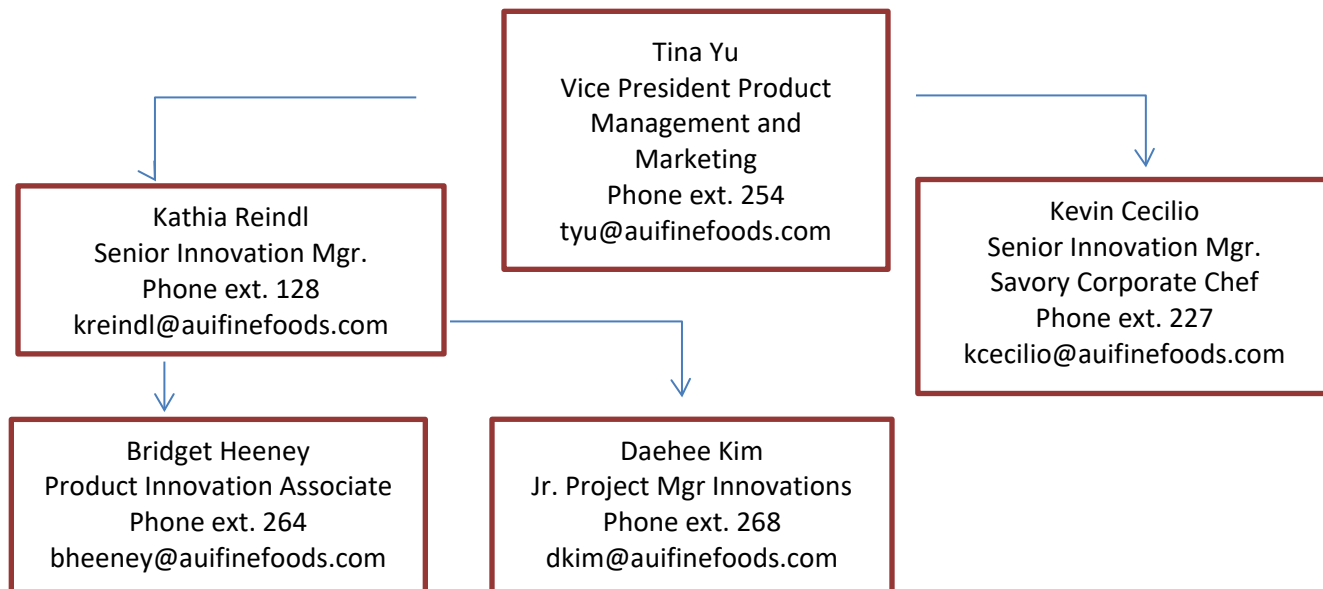
Your immediate AUI Team:

Supply Chain and Purchasing (**your main contact in Red Bold**):



All Team members can also be reached by email purchasing@auifinefoods.com

Innovation (**your main contact in Red Bold**):



SOS «Special Order Solutions» (**your main contact in Red Bold**):

Andrea Soura
Sales Operations
Phone ext. 204
asoura@auifinefoods.com

Tammy Hauprich
Sales Operations
Phone ext. 232
thauprich@auifinefoods.com

Quality:

Katherine Qu
Quality Assurance Manager
Phone ext. 133
kqu@auifinefoods.com

Finance and Accounting:

Thomas Carr
Controller
Phone ext. 209
tcarr@auifinefoods.com

accounts payable@auifinefoods.com

please communicate your needs directly with
purchasing@auifinefoods.com



Fine foods.
Inspired service.™

May 2022

Dear Vendor:

Due to changes in our receiving process, we require delivery appointments for most LTL / FTL shipments delivered to an AUI facility.

All AUI Facilities have one or more loading docks.

Receiving hours: 9:30 am -4:00 pm local time unless otherwise agreed to by the destination office

Appointment required: Dry/chilled (non-frozen): more than 3 pallets
Frozen: more than 3 pallets
Always e-mail or call for appointment 1 day prior to delivery

Loading requirements: Pallets may not be loaded sideways. We do not have equipment to turn pallets within the delivering truck. Sideways loaded shipments will be refused, and re-delivery is at the sender's expense. Due to liability, we will not offload non-AUI shipments if the AUI shipment is not available on a first-out basis.

BOL requirements: AUI PO# must be referenced
If temperature controlled, required temperature must be shown on BOL.

Frozen Courier parcels: All frozen parcels must be clearly marked with "KEEP FROZEN". AUI will not take responsibility for the safety of the product and cannot assure proper storage upon receipt unless marked as requested. Lack of "KEEP FROZEN" markings may result in a product claim.

Bill-to Party, regardless of delivery point is:

AUI Fine Foods (Albert Uster Imports Inc.)
9211 Gaither Road
Gaithersburg, MD 20877

Ship-to information / AUI contact information for delivery appointments:

Gaithersburg, MD:

Office code: WAS001
Ship-to: AUI, 9211 Gaither Rd, Gaithersburg, MD. 20877
Contact: Kyle Brown / Will Benitez
E-mail: wasreceiving@auifinefoods.com
Office: 301-258-7350 ext. **134 (Only Call if E-mail doesn't work)**



Fine foods.
Inspired service.™

Miami, FL:

Office code: FLL001
Ship-to: AUI, 11411 N.W. 107th St., Suite 16, Miami, FL. 33178
Contact: Daniel Garcia/ Roger Salgado
Office: 954-923-0858
Cell: 561-565-2706

Kansas City, MO:

Office code: KCI001
Ship-to: AUI, 8600 NE Underground Dr., Pillar 131 Kansas City, MO. 64161
Contact: Christian Corder / Dirk Anderson
Office: 816-452-8048
Cell: 816-666-0968

Las Vegas, NV:

Office Code: LAS001
Ship-to: AUI, 4525 W. Hacienda Ave., Unit 3W, Las Vegas, NV. 89118
Contact: Tyrone Larry / Berry Morgan
Office: 702-216-2800
Cell: 702-533-9709

San Leandro, CA:

Office Code: SFO001
Ship-to: AUI, 14269 Catalina St., San Leandro, CA. 94577
Contact: Jose Gonzales / DelMarco Oliver
Office: 510-352-7146
Cell: 510-423-8058

Lake Forest, CA:

Office Code: LAX001
Ship-to: AUI, 25 Empire Dr., Lake Forest, CA. 92630
Contact: Henry Cabral / Tokpa Chin
Office: 949-859-9022
Cell: 310-270-1272

Thank you for implementing these changes effective immediately.

Your AUI Purchasing and Distribution Center Teams